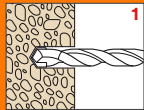
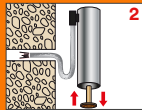


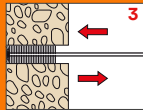
RESIN FOR CHEMICAL FIXINGS - INSTALL IN 9 EASY STEPS



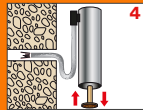
1
Drill correct size hole for your fixing



2
Blow out any debris from the hole



3
Brush the hole to ensure sides are clean



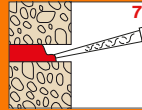
4
Blow out any debris



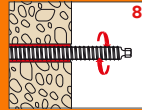
5
Repeat steps 2-4 4 times



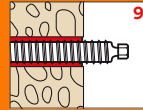
6
Extrude unmixed Resin to waste



7
Pump the resin to fill 2/3 of the hole



8
Insert fixing by slowly rotating



9
Leave to cure for the stated time