

# EVOLUTION-E2

**KEENCUT**  
THE WORLD'S FINEST CUTTING MACHINES

The ultimate manual cutter for wide format and graphic materials

**Created for the busy print shop, the Evolution-E2 reduces errors and wastage to save you time and money**

- The most accurate cutter on the market
- For high volume production
- Speeds up production
- Saves workshop space
- Versatile two-way cutting
- Keeps wastage to a minimum
- Safety by design
- Minimal set-up
- Simple and instinctive operation
- Precision-engineered for immediate 'out of the box' accuracy
- Guaranteed for 5 years

*"We chose the Evolution-E2 for the length of cut, quality of the product and easy change out from regular duty blades to heavy duty Graphik blades. It's built extremely well and has lasted for years without any issues."*

*Pete DiSpirito, Blazing Visuals*



Available in 5 sizes from 160cm to 360cm

## Perfect for cutting ...

### Semi-rigid materials

- Cardboard, PVC foam board, foam-centred board, corrugated plastic up to 13mm
- Mountboard and conservation board up to 3.5mm
- Flexible polycarbonate up to 3mm

### Flexible materials

- Tough materials: banners, pop-ups, magnetic sheets
- Film and self-adhesive vinyls
- Delicate materials: tissue paper, fabrics, wallpaper & textiles

### Rigid materials (scoring)

- Cast acrylic or Plexiglas up to 3mm

If your material is not in the list above we offer a free test cut service - for details please email [sales@keencut.co.uk](mailto:sales@keencut.co.uk)



**SINGEER.COM**  
**SUPER TOOLS**  
**FOR SIGN HEROES**  
**CALL US**  
**0800 5 999 059**

**MADE IN**  
**BRITAIN**



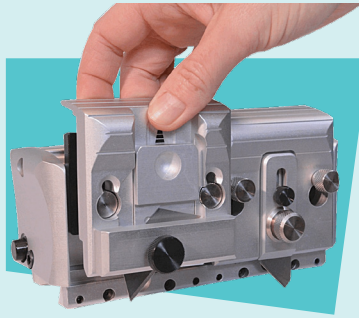
**Ultra High Precision** - Guaranteed to cut within 0.2mm of a straight line for the whole length of the cutter

[www.keencut.co.uk](http://www.keencut.co.uk)

## Speeds up production

### Double-tool head: single-handed cutting in both directions

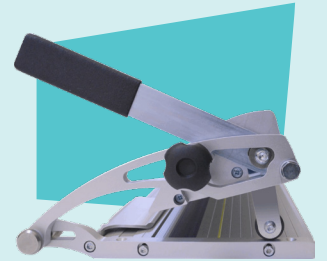
Keencut pioneered the double-tool head to allow single-handed cutting in both directions. With a choice of three holders, blades can be changed in seconds. All holders have built-in blade locking and/or guards for safety.



## Built for efficiency

**Integral, linked lift & hold** allows one operator to lift the complete cutter from either end for easy loading and positioning of media.

**Switchable cutting tracks** to switch between cutting groove and textile track for rotary blade use in seconds.



## Extreme accuracy

Built to Keencut's unique Ultra High Precision standard. Guaranteed to cut within 0.2mm of a straight line for the whole length of the cutter.

**Left & right flip stops** lock tougher materials in place to ensure a perfect cut.



## Saves space

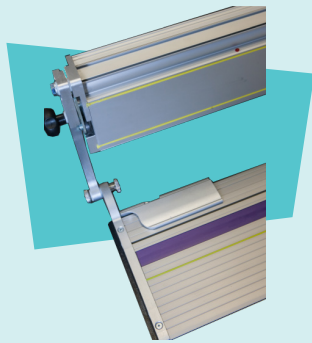
**Swing-down under bench storage** leaves work surface unobstructed when cutter is not in use, so maximising space and convenience.



## Protects work

**Soft silicon cord** on the underside of cutter and base, grips and protects media.

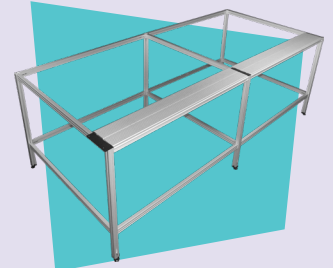
**Purple polymer cutting strip** is fitted to the full length of the base so no additional cutting mat is required when cutting textiles.



## OPTIONAL EXTRAS AND ACCESSORIES

### Evolution-E2 bench

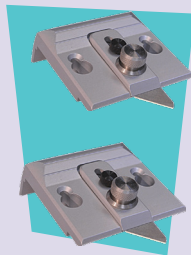
Built from high-grade, precision alloy for supreme strength and resilience. The unique lock joint gives safety under heavy loads and an ultra-rigid structure. Extension kits are available. Please note the Evolution-E2 will also fit onto an existing appropriate bench if preferred.



### Graphik blade holders (2 included)

Purpose-designed for tougher material like PVC foamboard where extra blade stability is required.

- The Graphik blades are manufactured from high-grade steel and have a special tip design for increased durability and reduced tip breakage.
- Orientates for left-right or right-left cutting.
- Sliding blade depth adjuster allows for quick and easy blade extension up to 13mm.



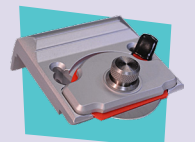
### Medium duty blade holder (included)

For use with standard off-the-shelf utility blades for lighter-duty applications. Adjusts to a maximum blade depth of 10mm.



### Circular blade holder (included)

To cold cut delicate textiles and other fabrics without snagging. Ideal for trimming banners and posters where a knife would be too aggressive.



## DIMENSIONS & TECHNICAL

	EV2160	EV2210	EV2260	EV2310	EV2360
Cut Length	160cm (64")	210cm (84")	260cm (104")	310cm (124")	360cm (144")
A	193cm (74")	243cm (94")	293cm (114")	343cm (133")	393cm (153")
B	26cm (10")	26cm (10")	26cm (10")	26cm (10")	26cm (10")
Packed Weight	32kg (70lbs)	40kg (88lbs)	48kg (106lbs)	56kg (123lbs)	63kg (139lbs)
Packed Dimensions cm (")	211x37x15cm (83x15x6")	261x37x15cm (103x15x6")	311x37x15cm (123x15x6")	361x37x15cm (143x15x6")	411x37x15cm (163x15x6")

